

## WINTER 2014/15 NEWSLETTER

### Moor invertebrates on the county list

*kiesenwetteri*



*Trigonotylus caelestialium*

*T. ruficornis*

*T. caelestialium*

### Chairman's Report

▶ Rosemary Parslow

*Walckenaeria unicornis*

*Agneta*

*Ozyptila*

*simplex*

*W. unicornis*



*Molinia*

*Agneta cauta*

*Campiglossa loewiana*

*Solidago virgaurea*

*Lophopilio palpinalis*



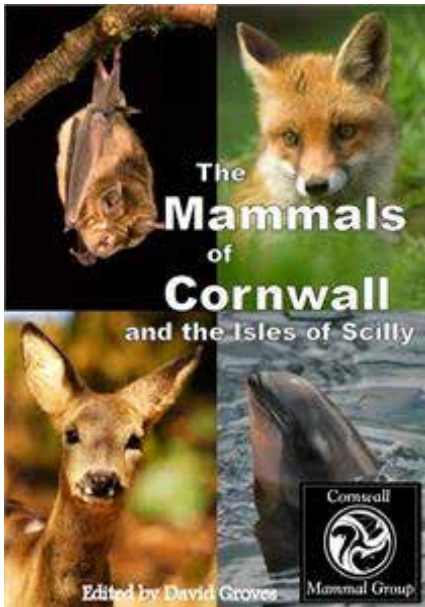
**Keith Alexander**

**I J Bennialick (CiSFBR Secretary)**

## BOOK REVIEW- **THE MAMMALS OF CORNWALL AND THE ISLES OF SCILLY**

*Edited by David Groves. Published by ERCCIS 2013. 200pp.*

*A5, softback, full colour maps and illustrations. Full page distribution maps.  
£10+pp.*



L R P

*Lutra lutra*

ALL

tony atkinson

Tony Atkinson

# “Bug-hunting, leaf-twitching, data-analysing and me....” Sally Luker

*Aphalara itadori*

*Aphalara itadori*

*Fallopia japonica*

*Aphalara itadori*



*Cacopsylla fatsiae tetrapanaxae*

*Cacopsylla fatsiae tetrapanaxae*

*Fatsia japonica Tetrapanax papyrifer*

*Agonoscena targionii*

*Pistacia lentiscus*

*Acizzia uncatoides*

*Paraserianthes lophantha Albizia lophantha*



*Agonoscena targionii*

*Crypturaphis grassii*

*Alnus cordata*

*Crypturaphis grassii*



*Acizzia uncatoides*



*Crypturaphis grassii*

*Bambusaspis  
bambusae*

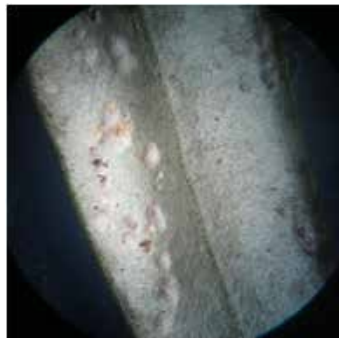
*Lichtensia viburni*

*Pinnaspis strachani*

*Aspidiotus nerii*

*Carulaspis  
minima*

*Dynaspidiotus  
britannicus*



*Pseudococcus  
viburni*

*Saissetia oleae*

*Nipaecoccus nipae*

*occus hesperidum*

*Pulvinaria floccifera*

*Chrysomphalus  
aonidum*

*Cameraria ohridella*

*Aesculus hippocastanum*

*ohridealla*

Sally Luker

*Non-Native Species in Great Britain: establishment, detection and reporting to inform effective decision making*



*Entomologist's Record & Journal of Variation*

*Crypturaphis grassii*

*Br. J. Ent. Nat.*

*British Wildlife*

*Cameraria ohridealla*  
*Aesculus*  
*hippocastanum*



# Pan-species listing



**Richard Comont**



# British Ecological Society's Festival of Ecology

## British Ecological Society's Festival of Ecology



*Ponentina subvirescens*

*Olisthopus rotundatus*

*Cathormiocerus myrmecophilus*

*Simpliocaria semistriata*

*Dictyonota strichnocera*  
*Kleidocerys truncatulus*  
*Ulopa reticulata*  
*Lochmaea suturalis*  
*Micrelus ericae*  
*Balea heydeni*

*Scaphidium quadrimaculatum*

*Dorcus parallelipipedus*

*Scaptomyza graminum*

*Exochomus quadripustulatus*



*Anthyllis vulneraria*

*Coccidula rufa*  
*Tetanocera hyalipennis*

*lipennis*

*Dolichoccephalus agilis*

*Atlantopsocus adustus*

*Xylophagus ater*

*Issus*

*Ablattaria laevigata*  
*Serica brunnea*  
*Melanimon tibiale*  
*Philopodon plagiatus*  
*Coccinella undecimpunctata*  
*Theba pisana*

*Issus muscaeformis*

Keith Alexander

Hazel Maureen Meredith

## Update on barkflies (Psocoptera) in Cornwall

*Valenzuela corsicus.*

*flavidus*

v.

*V. corsicus*

*Enderleinella obsoleta*



Keith Alexander

Ian Bennallick

A longer obituary will appear in the next CISFBR newsletter – if you have any memories or stories of Hazel please send to Ian Bennallick [ianbennallick@btinternet.com](mailto:ianbennallick@btinternet.com).



*Cornish Biological  
Records 12*

*Orthopteroid insects of  
Cornwall and the Isles of Scilly:  
a revised provisional atlas*

*Orthoptera Orthopteroid Insects  
of Cornwall and the Isles of Scilly: an  
updated provisional atlas*

*Red Data Book for Cornwall and the  
Isles of Scilly*



*colour in the garden  
for small gardens  
Climbing plants for walls  
and gardens*

*Winter  
Bulbs*

*Natural History  
of Sussex*

*Provisional Atlas  
of British Orthoptera*

*Grasshoppers and Allied Insects of  
Great Britain and Ireland*

*Atlas of grasshoppers,  
crickets and allied insects in Britain  
and Ireland*

*regularly receive stick-insect reports  
from Angarrack gardens!*

*planiscapus* *Ophiopogon*

**Malcolm Lee**

***Several comments and memories  
have been received about Chris and  
their times with him -***

**Adrian Spalding**



*Chorthippus parallelus*

*Orthopteroid  
Insects of Cornwall and the Isles of  
Scilly: an updated provisional atlas*

*sudeticus*

*Tabanus*

*Tabanus bovinus  
sudeticus*

**Paula Forrest**

**Sue Edwards**

Gryllus

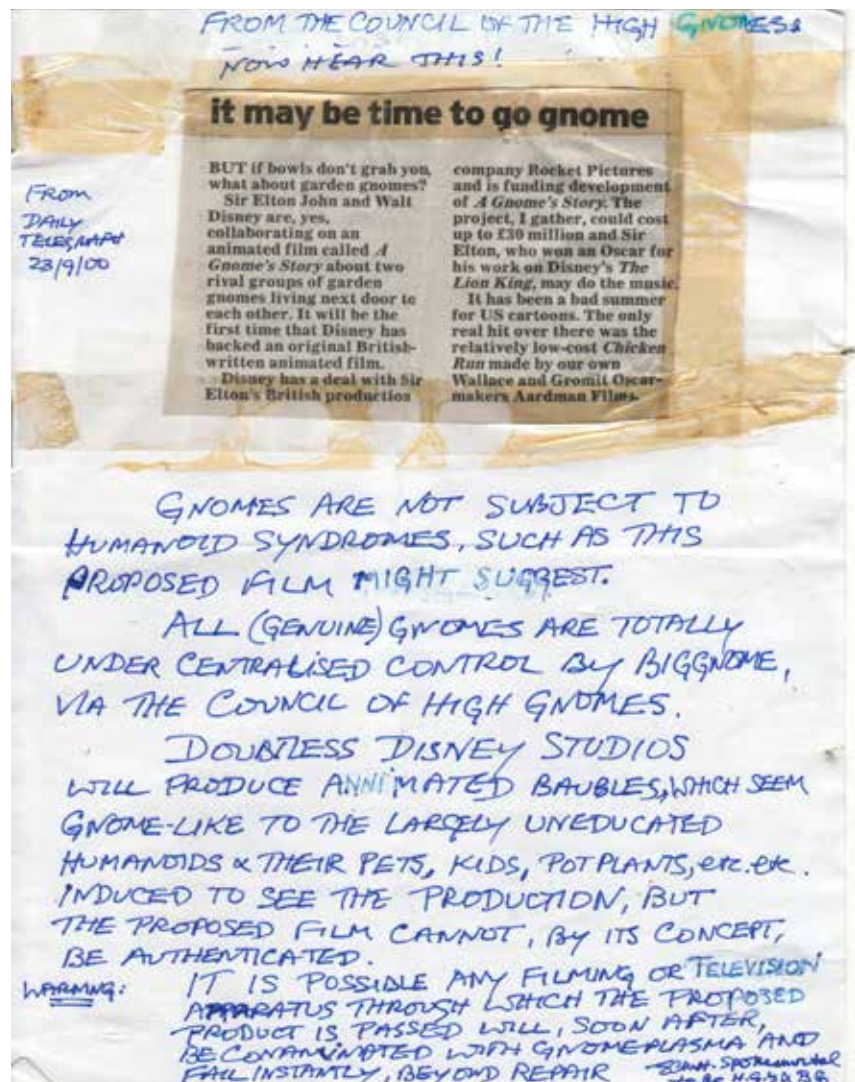
'Hortognomeraceae'

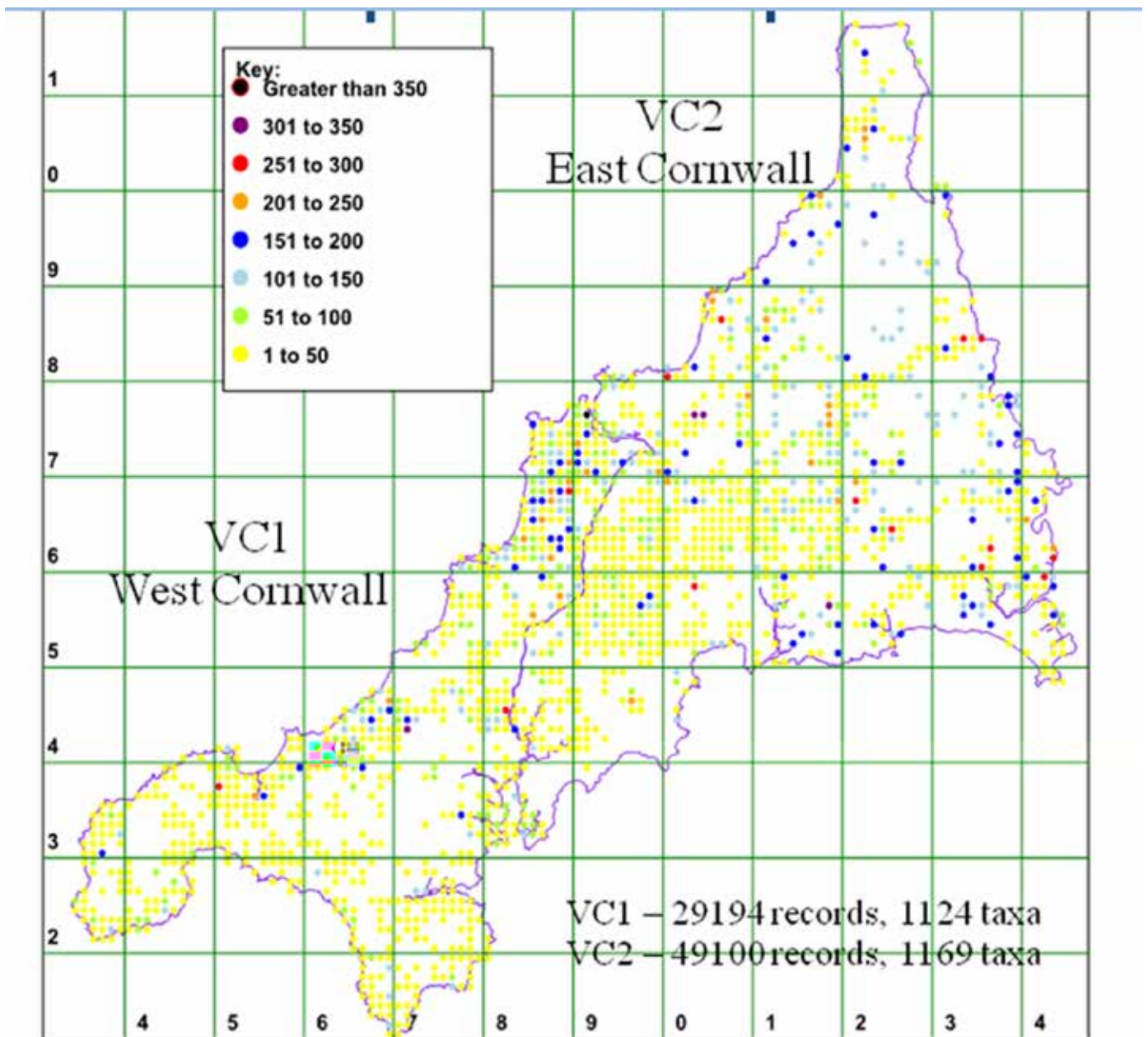
**Footnotes from Malcolm Lee –**

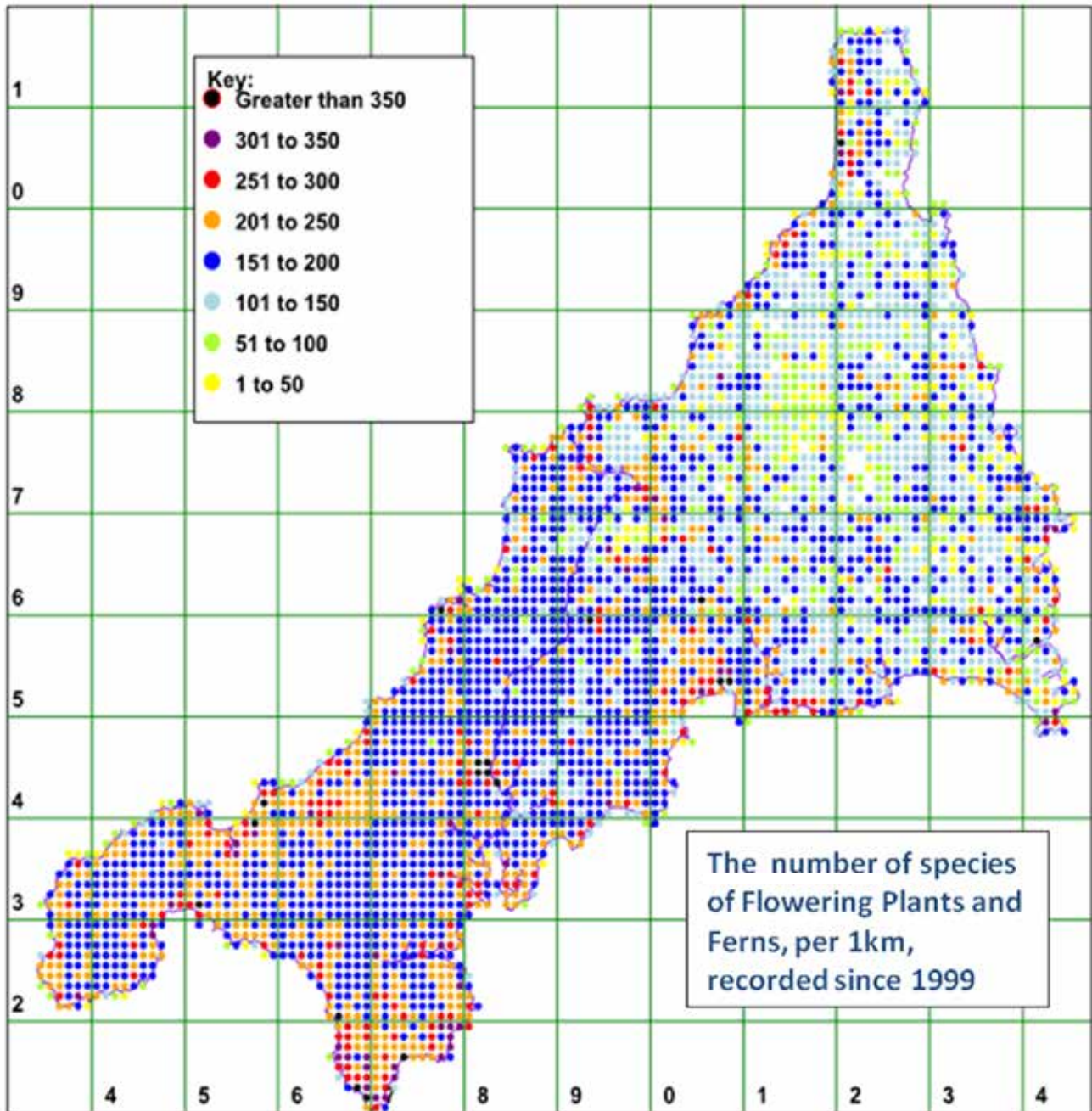
Sue, I was never sure Chris was a dog person. My old dog Alice had a habit that as soon as I stopped she would plonk her bottom down in front of me waiting for a biscuit. When Chris and I went surveying up my valley, Alice came too. Chris stopped to point out an interesting beetle on a plant, so I stopped. Alice promptly plonked her bottom right on said plant and beetle, looking expectantly at me for her treat! Chris did not say anything, but I doubt his thoughts would have been welcome at a meeting of the Dogs Trust.

man's  
lady's fatter

\* The film Chris referred to was subsequently made in 2011 called 'Gnomeo and Juliet'.







*Salicornia*  
*dolichostachya*

*Lycopodiella*  
*inundata*

*Hammarbya paludosa*



*Isoetes histrix*

*Allium scorodoprasum*

*Isoetes histrix*

*Mentha pulegium*



*Isoetes histrix*



*Allium scorodoprasum*

Chair

\_\_\_\_\_

Vice Chair

\_\_\_\_\_

Secretary

\_\_\_\_\_

\_\_\_\_\_



**CORNWALL AND ISLES OF SCILLY FEDERATION OF BIOLOGICAL RECORDERS**

Membership fees due at the AGM each year.

I would like to receive the newsletter and enclose my annual subscription of **£5**

Please make cheques payable to **CISFBR** and send to:

**Matt Stribley (CISFBR Treasurer & Membership Secretary), 8 St Georges Road, Truro, TR1 3JE**

A receipt will be sent to you. Payment is also accepted via BACS or PayPal (Payment is accepted via BACS and saves the cost of posting a cheque. The CISFBR bank account details are: Sort: 16-33-20 a/c no: 10121615

If you pay this way please let me know via email once you have made payment. Email [membership@cisfbr.org.uk](mailto:membership@cisfbr.org.uk).

The information will be held by CISFBR in order to contact you in connection with its activities.



Title Name

Address

Postcode

Tel:

Email:

I ENCLOSE £..... CASH/CHEQUE - (or will arrange BACS or Paypal payment)

Signed

Date